

(EN) Self-braking descender / belay device
(FR) Descendeur assureur autofreinant

WARNING

Activities involving the use of this equipment are inherently dangerous. You are responsible for your own actions and decisions.

Before using this equipment, you must:

- Read and understand all Instructions for Use.
- Get specific training in its proper use.
- Become acquainted with its capabilities and limitations.
- Understand and accept the risks involved.



FAILURE TO HEED ANY OF THESE WARNINGS MAY RESULT IN SEVERE INJURY OR DEATH.

3 year guarantee
Patented

529 g

www.petzl.com



Latest version



Other languages

PETZL
ZI Cidex 105A
38920 Crolles
France
www.petzl.com/contact
Tel: +33-(0)4 76 92 09 00

PETZL AMERICA
PO Box 160447
CLEARFIELD, UT 84016
Tel: +1-801-926 1500
info@petzl.com

ISO 9001
Copyright Petzl

NFPA CERTIFICATION FOR I'D L

D20 L

THIS I'D L MEETS THE AUXILIARY EQUIPMENT REQUIREMENTS OF NFPA 1983, STANDARD ON FIRE SERVICE LIFE SAFETY ROPE AND EQUIPMENT FOR EMERGENCY SERVICES, 2012 EDITION.

Belay Device
Descent control
device type 3

MBS 22 kN
G (GENERAL USE)
MEETS NFPA 1983 (2012 ED.)



This I'D L has passed the minimum breaking strength and holding load test using the following rope : [Bluewater Ropes, Spec-Static 11,5mm] and [Bluewater Ropes, Spec-Static 13mm]

After removing the notice from the equipment, make a copy of it and keep the original as part of a permanent record that includes the usage and inspection history for the equipment. Keep the copy of the notice with the equipment and refer to it before and after each use. Additional information regarding auxiliary equipment can be found in NFPA 1500, Standard on Fire Department Occupational Safety and Health Program, and NFPA 1983, Standard on Fire Service Life Safety Rope and System Components.

PETZL.COM



Latest version



Other languages



Technical tips



PPE checking

Warning symbols
Panneaux d'alertes

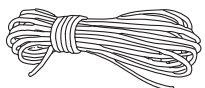


Sustaining our Community
Au service de la Communauté
FONDATION-PETZL.ORG

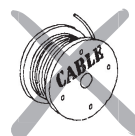


100%
Recycled paper

D20 L



$11,5 \leq \varnothing \leq 13 \text{ mm}$



(EN) Rope (core + sheath) static, semi-static (EN 1891) type A
(FR) Cordes (âme + gaine) statiques, semi-statiques EN 1891 type A
(DE) Seil (Kern + Mantel) statisch, halbstatisch (EN 1891) Typ A
(IT) Corda (anima + calza) statica, semistatica (EN 1891) tipo A
(ES) Cuerda (alma + funda) estática, semiestática (EN 1891) tipo A

CE 0082

a. Body controlling the manufacture of this PPE

b. Notified body that carried out the CE type examination

Apave Sudeurope SAS
8 rue Jean-Jacques Vernazza
Z.A.C. Saumathy-Séon - CS 60193
13322 MARSEILLE CEDEX 16
N°0082

c. Traceability: **datamatrix** = product reference + individual number

d. Rope diameter

e. Serial number
YY M 0000000 000

f. Year of manufacture

g. Month of manufacture

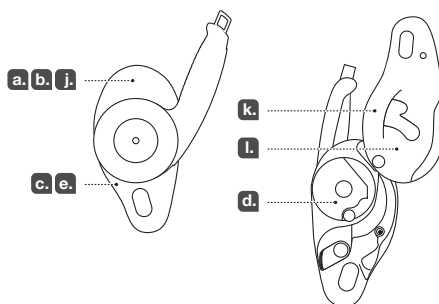
h. Lot number

i. Individual identifier

j. Standards

k. Carefully read the instructions for use

l. Model identification



EN 12841

EN 12841 : 2006 C

Personal fall protection equipment
- Rope access systems -
Rope adjustment devices

Working line descender

These instructions explain how to correctly use your equipment. Only certain techniques and uses are described.

The warning symbols inform you of some potential dangers related to the use of your equipment, but it is impossible to describe them all. Check Petzl.com for updates and additional information.

You are responsible for heeding each warning and using your equipment correctly. Any misuse of this equipment will create additional dangers. Contact Petzl if you have any doubts or difficulty understanding these instructions.

1 Field of application

Multi-purpose device.

This device is designed for more than one type of use.

Rope access descent:

EN 12841 type C rope adjuster.

Evacuating one or more persons:

EN 341: 1997 type A rescue descender.

Belaying

This product must not be pushed beyond its limits, nor be used for any purpose other than that for which it is designed.

WARNING

Activities involving the use of this equipment are inherently dangerous.

You are responsible for your own actions and decisions.

Before using this equipment, you must:

- Read and understand all Instructions for Use.
- Get specific training in its proper use.
- Become acquainted with its capabilities and limitations.
- Understand and accept the risks involved.

Failure to heed any of these warnings may result in severe injury or death.

Responsibility

WARNING: training is essential before use. This training must be suitable for the practices defined in the Field of Application.

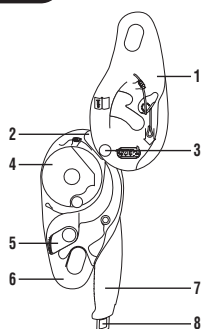
This product must only be used by competent and responsible persons, or those placed under the direct and visual control of a competent and responsible person.

Gaining an adequate apprenticeship in appropriate

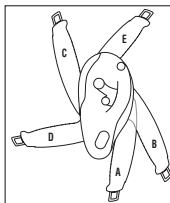
techniques and methods of protection is your own responsibility.

You personally assume all risks and responsibilities for all damage, injury or death which may occur during or following incorrect use of our products in any manner whatsoever. If you are not able, or not in a position to assume this responsibility or to take this risk, do not use this equipment.

2 Nomenclature of parts



- (1) Moving side plate,
(2) Friction plate, (3) Hinge,
(4) Cam, (5) Anti-error catch,
(6) Fixed side plate, (7) Handle,
(8) Horizontal movement button.

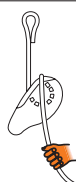


Handle positions:

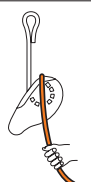
- (a) Transport,
(b) Work positioning,
(c) Descent,
(d) Panic brake,
(e) Belaying.

Terminology

Brake hand



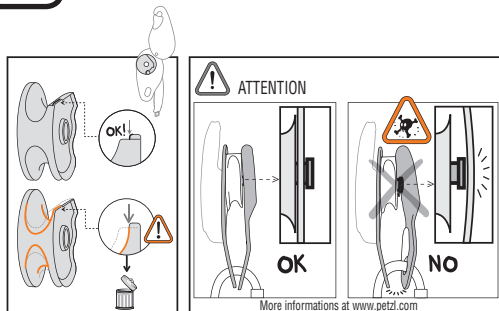
Braking side of the rope



Principal materials:

aluminum alloy (side plates), stainless steel (cam), chrome-plated steel (anti-error catch), nylon (handle).

3 Inspection, points to verify



Before each use

Verify there are no cracks, deformation, corrosion...

- Check the cam for wear; when the cam groove becomes worn all the way to the wear indicator, discontinue use of the I'D (see diagram).
- Check the moving side plate for deformation or excessive play: if the side plate can pass over the head of the cam axle, discontinue use of the I'D (see diagram).
- Check the locking components (hinge) and the operation of the

springs in the cam and the anti-error catch. Verify that the cam is fully mobile.

- Verify that the horizontal movement button springs back out after it is pressed (position c).

During use

Make sure that all items of equipment are correctly positioned with respect to each other. It is important to regularly monitor the condition of the product and its connections to the other equipment in the system. Do not allow anything to interfere with the

operation of the device or its components (cam, anti-error catch...). Beware of foreign objects in the I'D. The rope between the rope adjuster and the anchor must always be taut to reduce the risk of a free fall. Consult the details of the inspection procedure to be carried out for each item of PPE at Petzl.com/ppe. Contact Petzl if there is any doubt about the condition of this product.

4 Compatibility

For all of your applications, verify the compatibility of this product with the other elements of your system (compatibility = good functional interaction).

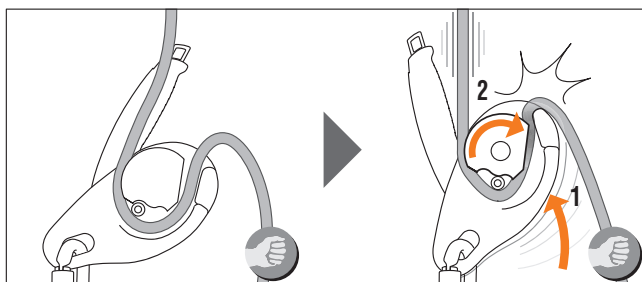
Ropes

Use only the recommended diameters and types of synthetic rope. The use of any other diameter/type of rope changes the performance of the device, especially the braking effectiveness.

WARNING: certain ropes may be slippery: new ropes, small diameter ropes, wet or frozen ropes...

Contact Petzl if you are uncertain about the compatibility of your equipment.

5 Working principle



When the rope becomes taut (suspension or fall), the I'D pivots on the carabiner (1) and the cam pinches and brakes the rope (2). By holding the brake side of the rope, the brake hand helps engage the cam.

6 Installing the rope

Open the moving side plate. Put the handle in position (c) to open the cam. Insert the rope as indicated by the diagrams engraved on the device. Close the moving side plate.

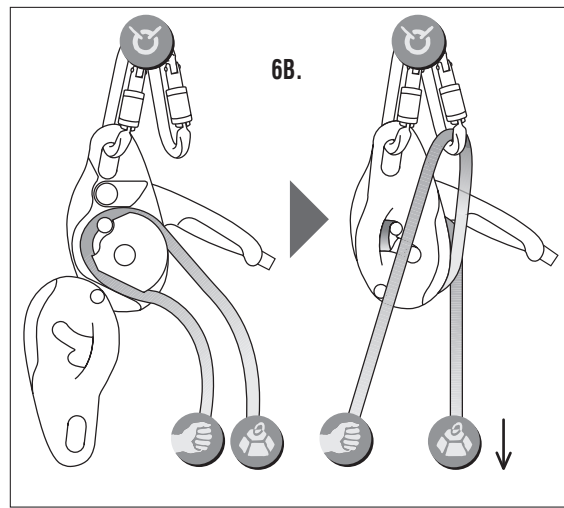
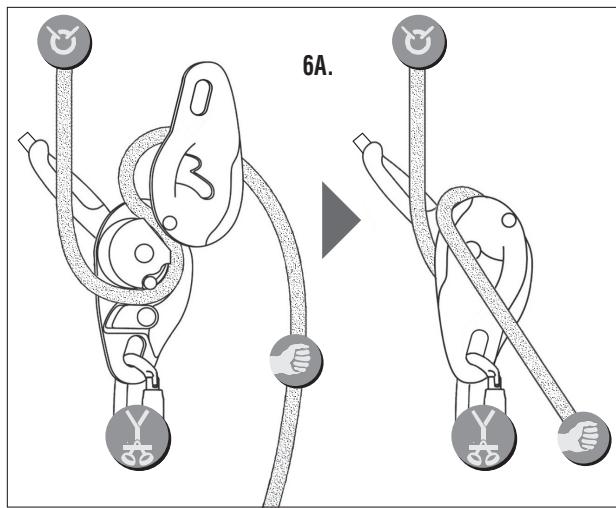
Connect the I'D with a locking carabiner.

WARNING: the moving side plate must be properly engaged on the cam axle and on the carabiner.

6A. Device on the harness

6B. Device on an anchor
You must add friction by redirecting the brake side of the rope through a carabiner.

Warning: the anti-error catch can catch a rope that is installed backwards, but it does not eliminate all possible errors.



7 Function test

Before each use, verify that the rope is correctly installed and that the device is working properly. You must always use a backup safety system when performing this test.

WARNING - DANGER OF DEATH: do not allow anything to interfere with the operation of the device or its components (cam, anti-error catch...). Any constraint on the device negates the braking action.

7A. Device on the harness

Pull on the anchor side of the rope; the rope must lock in the device. If not, check that the rope is correctly installed. Gradually put your weight onto the device (rope taut, handle in position c). With one hand holding the brake side of the rope, gradually pull on the handle with the other hand to allow the rope

to slide:

- Descent is possible = rope correctly installed.
- Descent is impossible = check the installation of the rope (rope locked by the anti-error catch).

When the handle is released, the I'D brakes, then locks the rope.

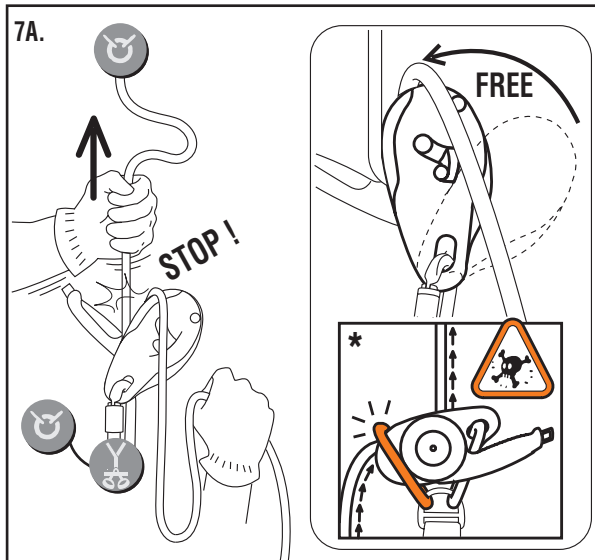
Warning: if your device still doesn't work (rope slippage), retire it.

7B. Device on the anchor

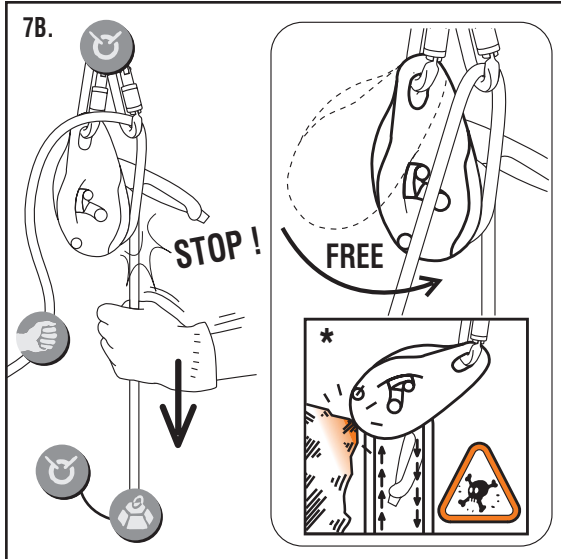
Pull on the load side of the rope; the rope should lock in the device. If not, check that the rope is correctly installed.

Warning: if the rope is installed backwards without being redirected through a braking carabiner, the anti-error catch will not work.

Warning: if your device still doesn't work (rope slippage), retire it.



7 Function test



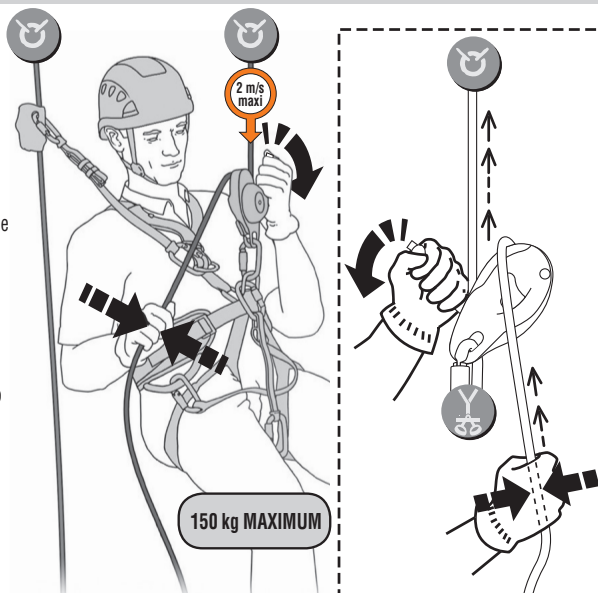
8 EN 12841: 2006 Type C

The EN 12841: 2006 I'D L descender is a type C rope adjuster used to descend the work rope. The I'D L is a braking device for rope that allows the user to manually control the speed of descent and to stop anywhere on the rope by releasing the handle. To meet the requirements of the EN 12841: 2006 type C standard, use 11.5-13 mm EN 1891 type A semi-static ropes (core + sheath). (Note: certification testing was performed with a 150 kg mass using 11.5 mm BEAL Antipodes and 13 mm EDELWEISS Rescue ropes.)

8A. Descent

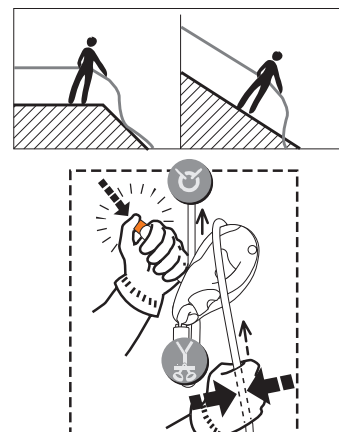
One person

Device on the harness (position c): you control your descent by varying your grip on the brake side of the rope; to descend, pull gradually on the handle. Always hold the brake side of the rope. Release the handle to stop the descent. In a panic situation: if the handle is pulled too much (position d) the device brakes, then locks the rope. To continue the descent, first move the handle upwards (position c).



Horizontal movement button

- On sloping or horizontal terrain, or with light loads, the panic brake activates easily. To make your descent smoother, use the horizontal movement button.
- Do not use the horizontal movement button during a vertical descent.



8B. Work positioning - secured stop

After stopping at the desired location, to switch to the hands-free work positioning mode, lock the device on the rope by moving the handle in the direction opposite to that used for descent (turned to position b). For work positioning, the I'D must be set in this position. Once the handle has stopped at position b (positioning), do not force the handle. The handle must not be in position a (transport) with a rope in the device. There is a risk of damaging the device, which can negate the braking function. To unlock the system, firmly grip the brake side of the rope and move the handle into descent position.

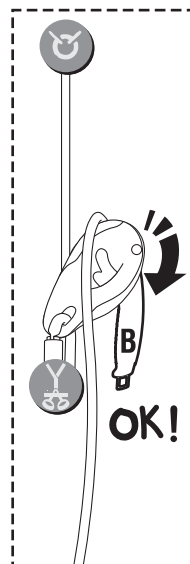
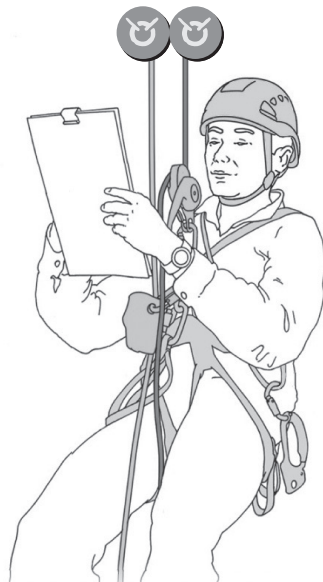
Information on the EN 12841 standard

WARNING: the I'D L descender must be used in conjunction with a type A backup device (e.g. the ASAP) on a second rope (called the "safety rope").

The I'D L descender is not suitable for use in an EN 363 fall arrest system.

Attach your descender directly to the harness using an EN 362 locking carabiner. Any equipment used with your descender must be in compliance with current standards. When you are under tension on the work rope, make sure that the safety rope is not loaded.

A dynamic overload can damage the safety rope.

**EN 341 class A (1997) Rescue evacuation**

Maximum descent height: 200 m.

Normal working load: 30-150 kg.

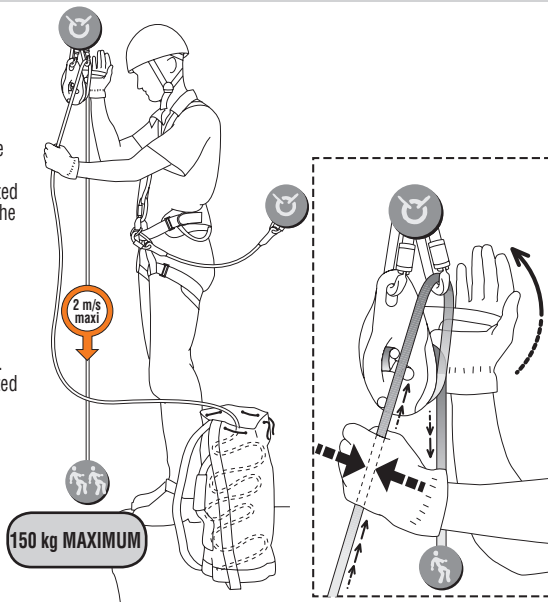
Lowering from an anchor-point

Device on the anchor: the brake side of the rope must be redirected through a carabiner. Hold the brake side of the rope and move the handle up (position c) to allow the rope to slide. Braking is regulated by varying the grip on the brake side of the rope. Release the handle to activate the self-braking function.

When the device is lightly loaded, if the panic brake activates too easily, use the horizontal movement button.

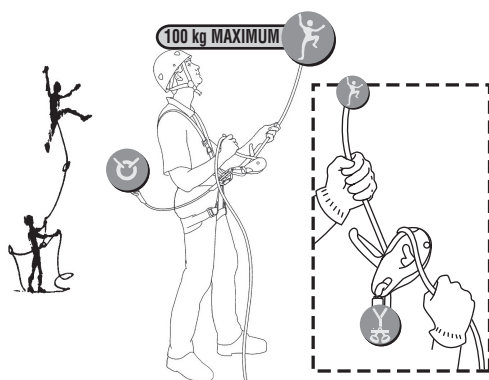
Information on the EN 341 standard

- Always tie a knot at the end of the rope.
- Equipment left in place must be protected from the elements.
- Do not lose control during the descent; descend at a reasonable speed.
- Warning: the device can overheat and damage the rope during descent.

**Belaying****10A. Belaying the leader: 100 kg**

Use an EN 892-certified dynamic rope.

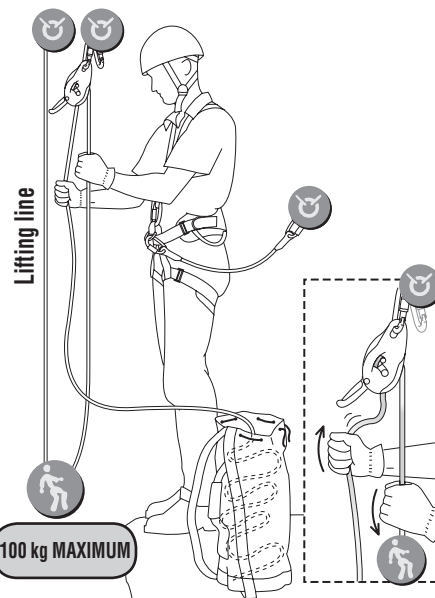
Device on the harness (position e): before use, verify the rope is correctly installed. The brake side of the rope is held in one hand and the climber side in the other. To facilitate rope glide, focus more on pushing the brake side of the rope into the device rather than pulling the climber side of the rope. To stop a fall, firmly grip the brake side of the rope. To lower a climber, the manipulation of the device is similar to the description found under Descent.

**10B. Belaying: 100 kg**

Belaying a second, and hauling (usage without redirecting the rope through a carabiner).

Warning: in the event of an error (rope installed backwards), the anti-error catch will not work in this position.

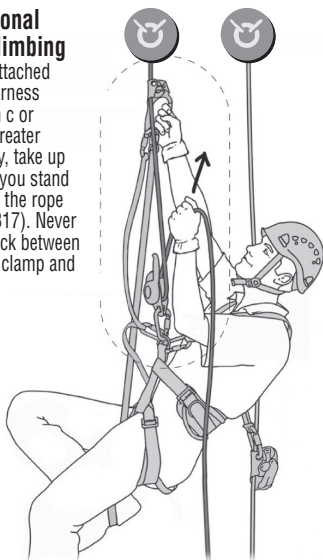
Device on the anchor (position e): the belayer holds the brake side of the rope with one hand, and the second's rope with the other. Take in slack regularly. To stop a fall, firmly grip the brake side of the rope. To lower a climber, the manipulation of the device is similar to the description found under Lowering from an anchor (use a braking carabiner).



11 Other use

Occasional rope climbing

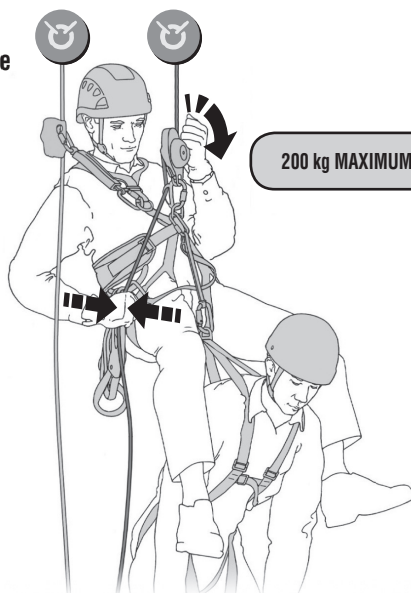
Device attached to the harness (position c or d). For greater efficiency, take up slack as you stand up using the rope clamp (B17). Never allow slack between the rope clamp and the I'D.



12 Heavy loads, exceptional uses for experts only

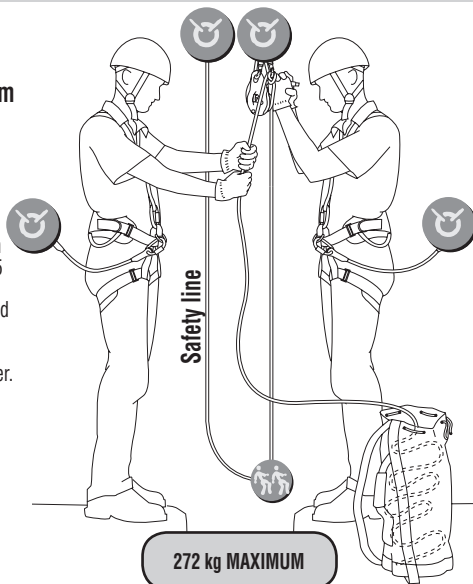
These operations must only be performed by rescuers specifically trained in these uses. For heavy loads, shock-loading must absolutely be avoided.

12A. Evacuation: accompanied descent, device on the harness
Maximum load: 200 kg
A braking carabiner must be used.

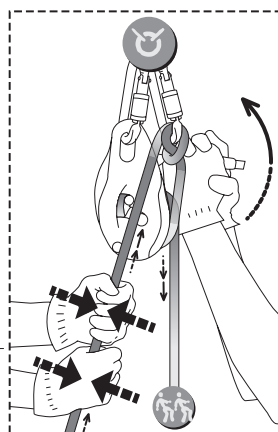


12 Heavy loads, exceptional uses for experts only

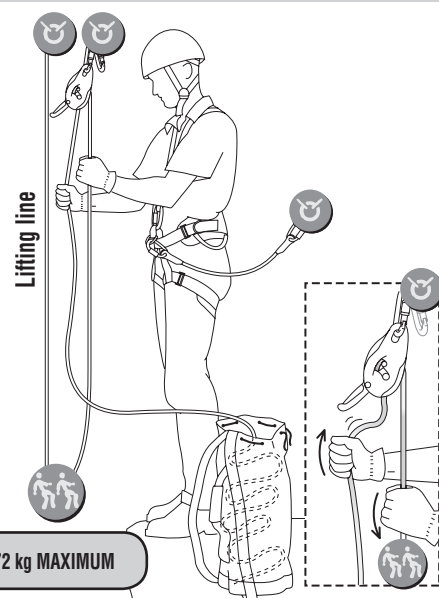
12B. Evacuation: lowering from an anchor-point
Maximum load: 272 kg
- Use a rope with a minimum diameter of 12.5 mm.
- We recommend using a Munter hitch on the braking carabiner.
- One person operates the handle of the device, while a second person holds the rope.



$\varnothing \geq 12,5 \text{ mm}$



12C. Belaying
Maximum load: 272 kg
- For belaying heavy loads while raising, use a rope with a minimum diameter of 12.5 mm. Take in slack regularly.
- If you have to lower or belay the load during descent, see chapter 12B.



13 ANSI standards information

- Maximum descent height: 200 m.
- The Instructions for Use must be provided to the user of this equipment.
- The Instructions for Use for each item of equipment used in conjunction with this product must be followed.
- Product inspection must be carried out according to the manufacturer's recommendations given in the Instructions for Use and the product inspection form.
- Anchors used for a rescue must be strong enough to hold a static load of at least 13.8 kN or 5 times the load placed on the system.
- In a rescue, the anchors used for fall arrest must meet ANSI Z359.1 requirements.
- Connections to anchors must be done in a way that avoids any accidental movement of the system during rescue. Perform a tension test on the connection before applying the full load.
- In a rescue context, refer to ANSI Z359.4 and Z359.1.
- Rescue plan: you must have a rescue plan and the means to rapidly implement it in case of difficulties encountered while using this equipment.
- Warning: when using multiple items of equipment, a dangerous situation can arise in which the safety function of an item of equipment can be affected by the safety function of another item of equipment.
- Be vigilant when working near sources of electricity, moving machinery, abrasive or sharp surfaces, or in an environment presenting chemical or extreme temperature hazards.
- The energy of descent is equal to the product of the descent length, the mass of the person and the acceleration of gravity.

14 Petzl general information

- You must have a rescue plan and the means to rapidly implement it in case of difficulties encountered while using this equipment.
- The anchor point for the system should preferably be located above the user's position and should meet the requirements of the EN 795 standard (12 kN minimum strength).
- In a fall arrest system, it is essential to check the required clearance below the user before each use, in order to avoid any impact with the ground or with an obstacle in case of a fall.
- Make sure that the anchor point is correctly positioned, in order to limit the risk and the length of a fall.
- A fall arrest harness is the only device allowable for supporting the body in a fall arrest system.
- When using multiple items of equipment, a dangerous situation can

- arise in which the safety function of an item of equipment can be affected by the safety function of another item of equipment.
- WARNING - DANGER: take care that your products do not rub against abrasive or sharp surfaces.
 - Users must be medically fit for activities at height. WARNING: inert suspension in a harness can result in serious injury or death.
 - The Instructions for Use for each item of equipment used in conjunction with this product must be followed.
 - The Instructions for Use must be provided to the user of this equipment, in the language of the country where the equipment is used.
 - Make sure the markings on the product are legible.

When to retire your equipment:

WARNING: an exceptional event can lead you to retire a product after only one use, depending on the type and intensity of usage and the environment of usage (harsh environments, marine environment, sharp edges, extreme temperatures, chemicals...).

A product must be retired when:

- It has been subjected to a major fall (or load).
- It fails to pass inspection. You have any doubt as to its reliability.
- You do not know its full usage history.
- When it becomes obsolete due to changes in legislation, standards, technique or incompatibility with other equipment...

Destroy these products to prevent further use.

Icons:

A. Unlimited lifetime - B. Acceptable temperatures - C. Usage precautions - D. Cleaning - E. Drying - F. Storage/transport - G. Maintenance/repairs (prohibited outside of Petzl facilities, except replacement parts) - I. Questions/contact

3-year guarantee

Against any material or manufacturing defect. Exclusions: normal wear and tear, oxidation, modifications or alterations, incorrect storage, poor maintenance, negligence, uses for which this product is not designed.

Warning symbols

1. Situation presenting an imminent risk of serious injury or death. 2. Exposure to a potential risk of accident or injury. 3. Important information on the functioning or performance of your product. 4. Equipment incompatibility.

A. Lifetime / Durée de vie



B. Acceptable T° T° tolérées



F. Storage - Transport Stockage - transport



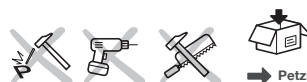
G. Maintenance Entretien



C. Precautions for use / Précautions d'usage



H. Modifications - Repairs Modifications - Réparations



I. FAQ - Contact Questions - Contact



D. Cleaning / Nettoyage



E. Drying / Séchage

